

WAAS CH <b>82011</b> <b>W33A</b>	APP CRS <b>332°</b>	Rwy Idg TDZE <b>941</b> Apt Elev <b>969</b>	<b>6655</b>
--	------------------------	---	-------------

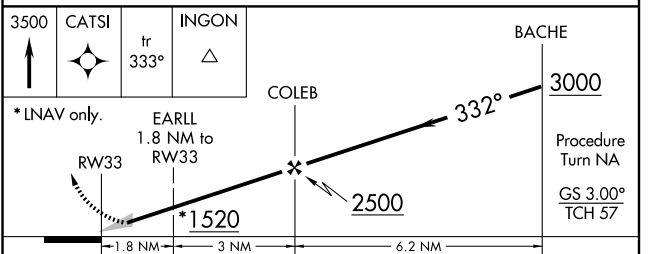
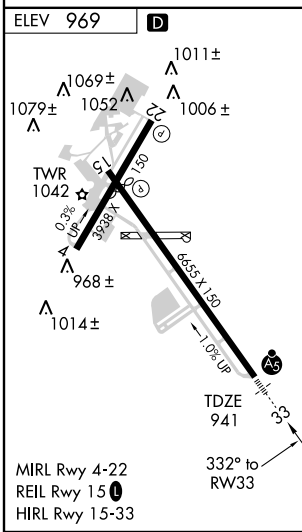
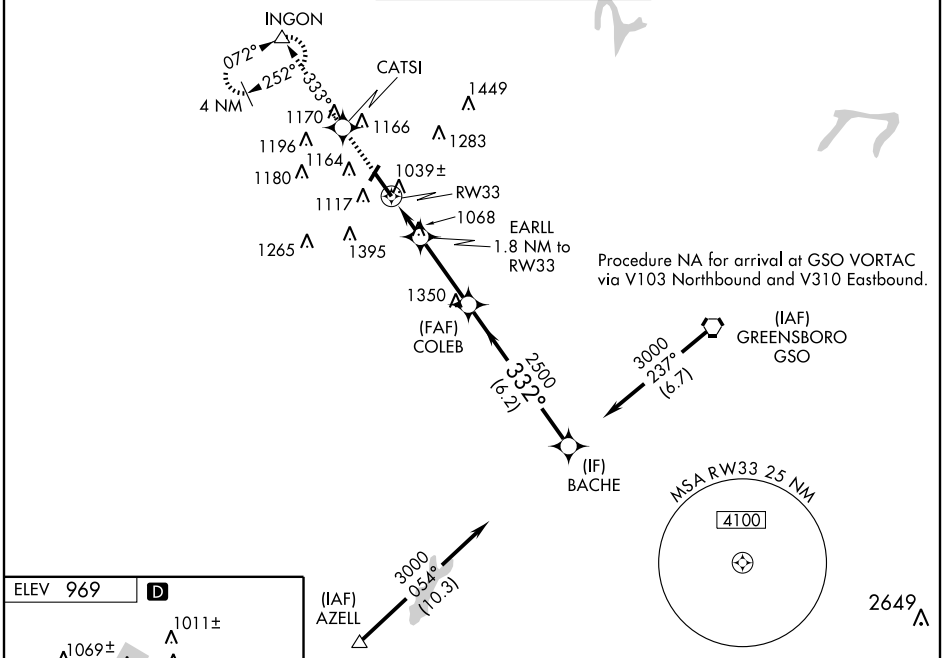
# RNAV (GPS) RWY 33

WINSTON-SALEM / SMITH REYNOLDS (INT)

For inoperative MALS, when using Piedmont Triad Intl altimeter setting, increase LPV all Cats. visibility to 1 mile. Baro-VNAV NA when using Piedmont Triad Intl altimeter setting. For uncompensated Baro-VNAV systems, LNAV/VNAV NA below -16°C (4°F) or above 47°C (116°F). DME/DME RNP-0.3 NA. Visibility reduction by helicopters NA. When local altimeter setting not received, use Piedmont Triad Intl altimeter setting and increase all DA 39 feet, and all MDA 40 feet, increase LNAV/VNAV all Cats. and Circling Cat. D visibility ¼ mile.

**MALS**  
MISSED APPROACH:  
Climb to 3500 direct CATSI and via 333° track to INGON and hold, continue climb-in-hold to 3500.

ATIS <b>121.3</b>	GREENSBORO APP CON <b>124.35 269.225</b>	WINSTON-SALEM TOWER ★ <b>123.75 (CTAF) 0 257.8</b>	GND CON <b>128.25</b>	UNICOM <b>122.95</b>
----------------------	---	---	--------------------------	-------------------------



CATEGORY	A	B	C	D
LPV DA	1141/24 200 (200-½)			
LNAV/VNAV DA	1407/60 466 (500-1¼)			
LNAV MDA	1380/24	439 (500-½)	1380/40 439 (500-¾)	1380/50 439 (500-1)
CIRCLING	1480-1 511 (600-1)	1580-1 611 (700-1)	1580-1¾ 611 (700-1¾)	1740-2½ 771 (800-2½)

SE-2, 18 NOV 2010 to 16 DEC 2010

SE-2, 18 NOV 2010 to 16 DEC 2010