

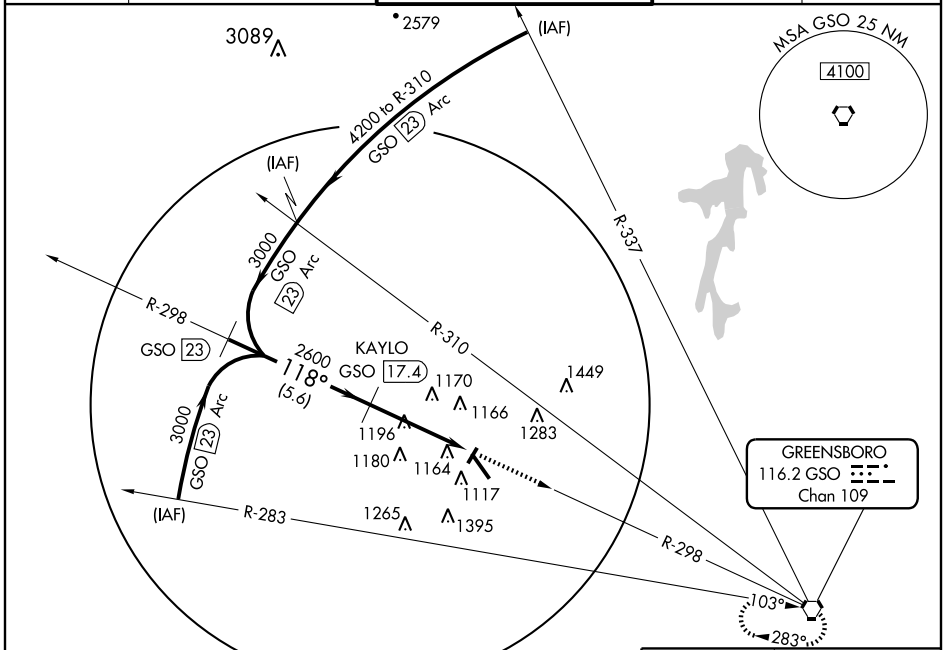
VORTAC GSO 116.2 Chan 109	APP CRS 118°	Rwy Idg TDZE Apt Elev 6069 968 970
---	------------------------	--

VOR/DME RWY 15

WINSTON-SALEM / SMITH REYNOLDS (INT)

MISSED APPROACH: Climb to 3000 direct GSO VORTAC and hold.

ATIS 121.3	GREENSBORO APP CON 124.35 269.225	WINSTON-SALEM TOWER ★ 123.75 (CTAF) 257.8	GND CON 128.25	UNICOM 122.95
----------------------	---	---	--------------------------	-------------------------



SE-2, 18 NOV 2010 to 16 DEC 2010

SE-2, 18 NOV 2010 to 16 DEC 2010

Procedure Turn NA	GSO [23]	3000	GSO	
		↑	⬠	
VGSI and descent angles not coincident.	3000	118°	2600	GSO [13.3]
			3.66° TCH 36	
	5.6 NM		4.1 NM	
CATEGORY	A	B	C	D
S-15	1500-1	532 (600-1)	1500-1½ 532 (600-1½)	1500-1¾ 532 (600-1¾)
CIRCLING	1500-1 530 (600-1)	1580-1 610 (700-1)	1580-1¾ 610 (700-1¾)	1740-2½ 770 (800-2½)

ELEV 970 **D**

118° 4.1 NM from FAF

1079±, 1069±, 1052±, 1011±, 1006±, 968±, 1014±

TWR 1042, TDZE 968, 6655 X 150, 1.00% UP, 3.28% UP